

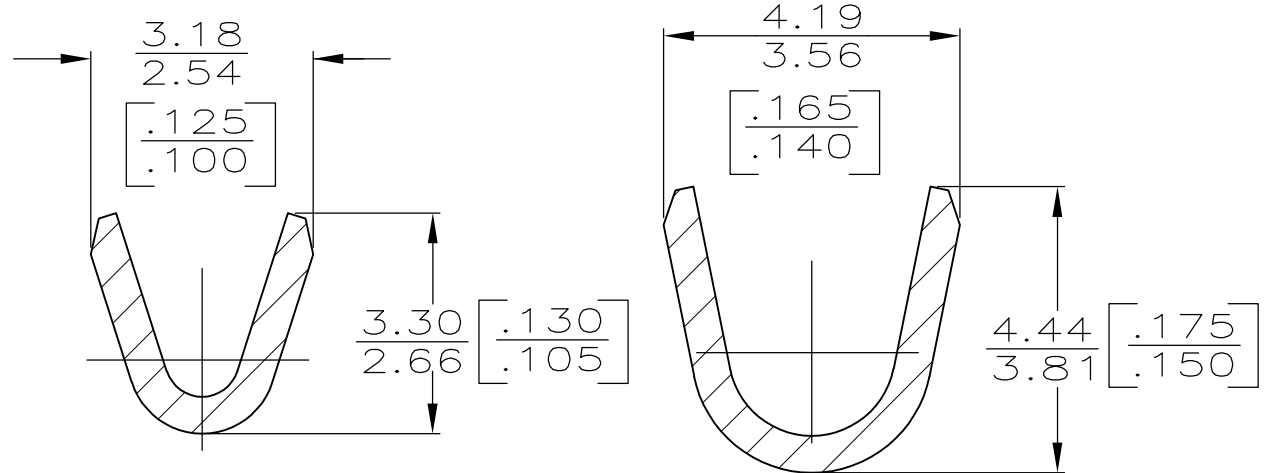
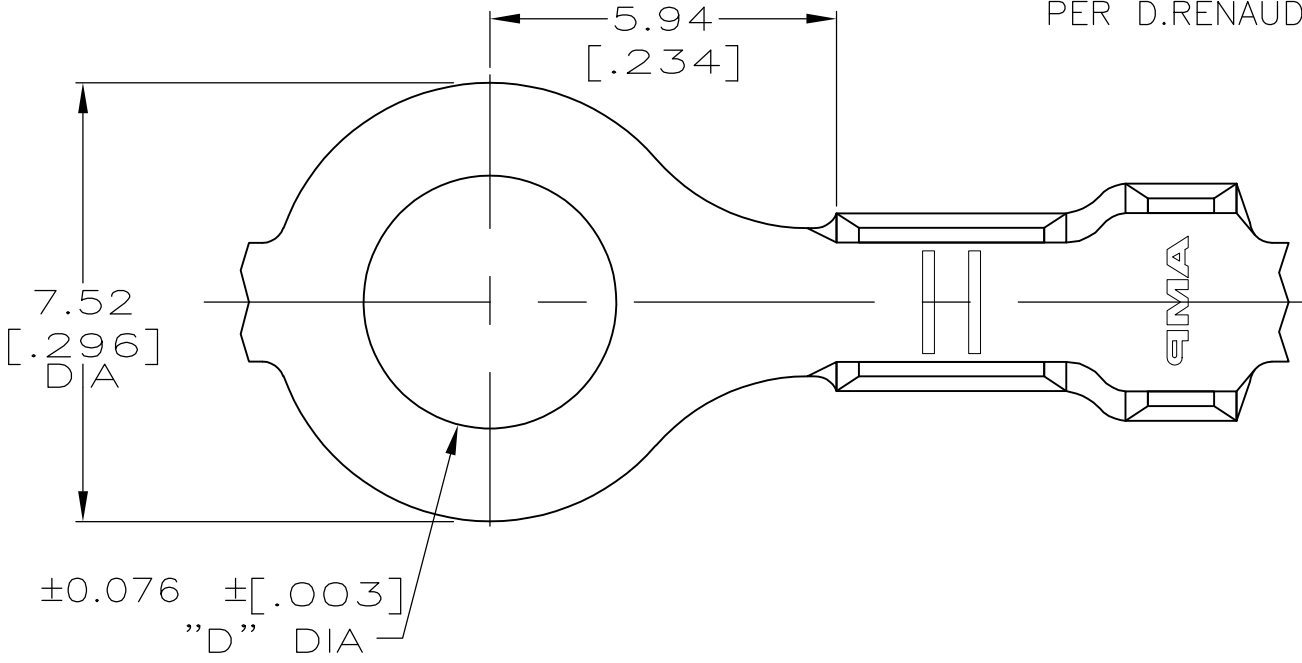
THIS DRAWING IS UNPUBLISHED. RELEASED FOR PUBLICATION
 © COPYRIGHT - By - ALL RIGHTS RESERVED.

LOC	DIST	REVISIONS			
P	LTR	DESCRIPTION	DATE	DWN	APVD
AF	50	L2	REVISED PER ECO-11-004587	11MAR11	RK HMR

6 REDUCED PACKAGE QUANTITY.

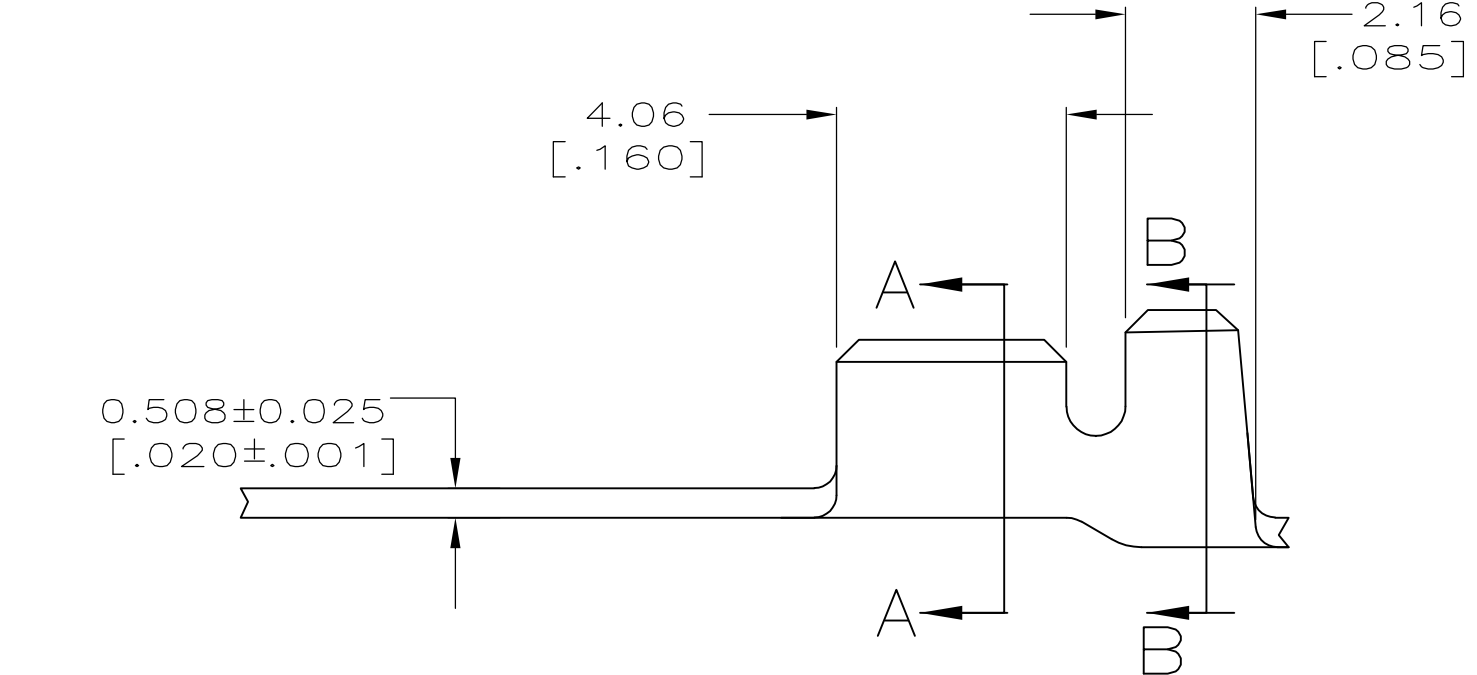
7 OBSOLETE PARTS: OBSOLETE CIS STREAMLINING PER D.RENAUD/D.SINISI

- 1 CONTINUOUS STRIP ON REEL.
- 2 WIRE SIZE IS [#22-#18] AWG.
- 3 INSULATION RANGE IS 2.03-2.79 [.080-.110] DIA.
- 4 FOR FOREIGN PRODUCTION ONLY REELED WITH PAPER INTERLEAVE
- 5 PRELIMINARY - NOT FOR PRODUCTION



SECTION A-A
SCALE 10:1

SECTION B-B
SCALE 10:1



FINISH	STUD SIZE	D	DIM	PART NO
TIN PLATING	M 3.5 - [#6]	3.68	[.145]	42037-9
TIN PLATING	[#10]	5.00	[.197]	42037-8
OBSOLETE	TIN PLATING M 4 - [#8]	4.34	[.171]	42037-7
OBSOLETE	TIN PLATING [#10]	5.00	[.197]	42037-6
TIN PLATING	[#10]	5.00	[.197]	42037-2
TIN PLATING	M 4 - [#8]	4.34	[.171]	42037-1
TIN PLATING	M 3.5 - [#6]	3.68	[.145]	42037

0.508±0.025
[.020±.001]

THIS DRAWING IS A CONTROLLED DOCUMENT.

DIMENSIONS: mm [INCHES]	TOLERANCES UNLESS OTHERWISE SPECIFIED:
	0 PLC ± -
	1 PLC ± -
	2 PLC ± 0.25 [.010]
	3 PLC ± -
	4 PLC ± -
	ANGLES ± -
MATERIAL 082 BRASS	FINISH SEE TABLE

DWN	JR RUTH	01AUG00
CHK	MS FEHER	01AUG00
APVD	D DECKER	01AUG00
PRODUCT SPEC		
APPLICATION SPEC		
WEIGHT	-	



NAME				RING	
SIZE	CAGE CODE	DRAWING NO	RESTRICTED TO		
A3	00779	C-42037	-		
CUSTOMER DRAWING		SCALE	SHEET	REV	
		8:1	1 OF 1	L2	